

SWEET-ORR®

WE NEVER LET YOU DOWN



• EST 1871 •

WORKWEAR STOCK CATALOGUE

2025/2026

SUPERIOR PROTECTIVE WORKWEAR

— SINCE 1871 —



TOUGH JOBS. TOUGH WORKWEAR.

— SINCE 1871

We understand that the toughest environments require the toughest garments. That is why we place continued emphasis on innovation, research and development, ensuring that our protective workwear always meets the highest standards.

Our products give the wearer the confidence to handle every job with protective workwear craftily engineered for the task. Garments are expertly designed and developed by highly skilled teams, who have been sharing their artistry and devotion for over 150 years.

SWEET-ORR®
WE NEVER LET YOU DOWN

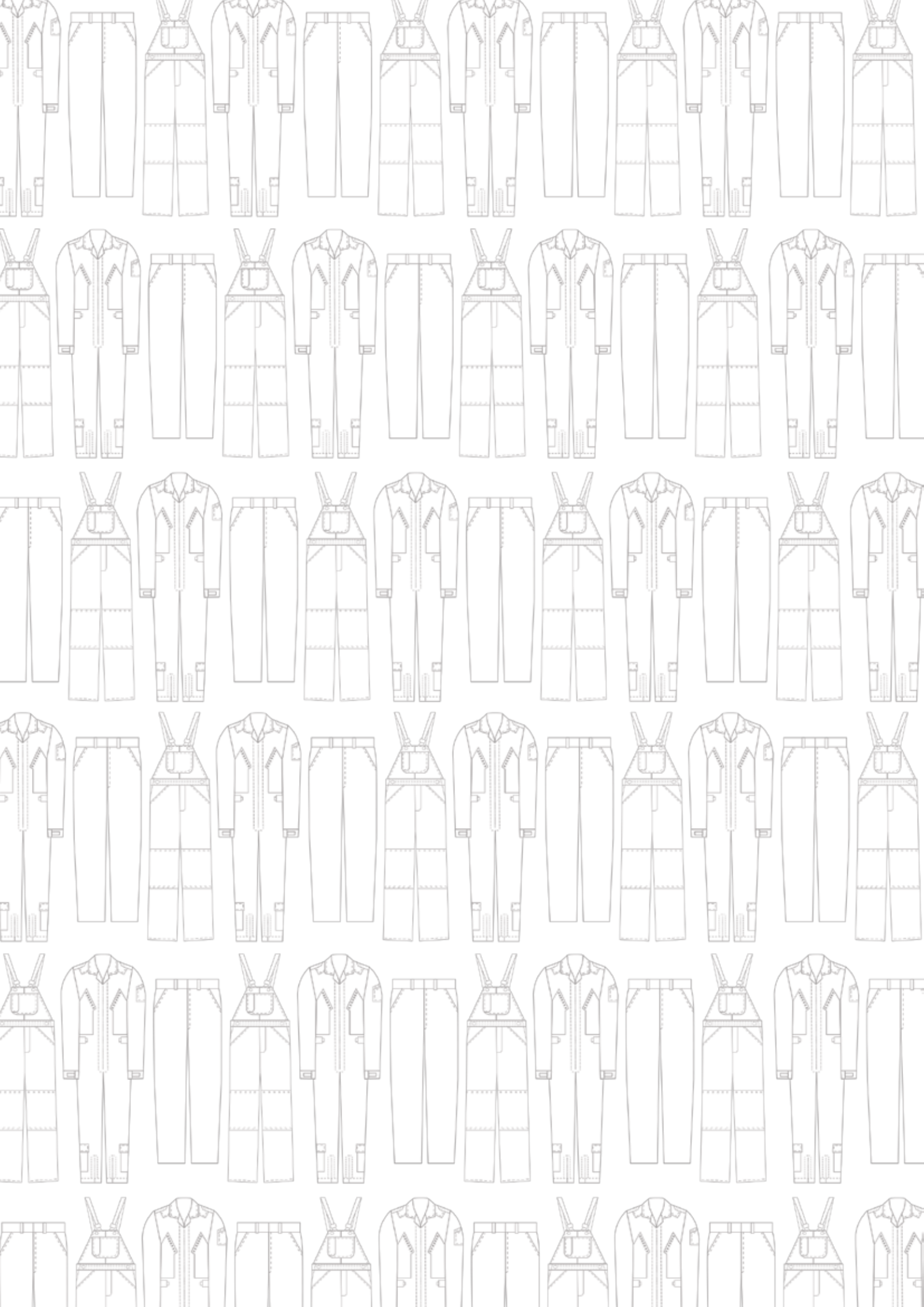


EST 1871

SUPERIOR PROTECTIVE WORKWEAR

— SINCE 1871 —





WORKWEAR STOCK CATALOGUE

2025/2026

CONTENTS

01 ESSENTIAL WORKWEAR	5
02 SPECIALISED WORKWEAR.....	13
FLAME RETARDANT WORKWEAR.....	16
ACID REPELLANT WORKWEAR.....	20
FLAME ACID WORKWEAR.....	24

 SUPERIOR PROTECTIVE WORKWEAR, SINCE 1871.



UNCOMPROMISED SAFETY.

Our Essential Workwear range provides practical solutions for everyday protection in both low and medium risk environments. By focusing on reliability and durability, we ensure that your safety will not be compromised.

ESSENTIAL WORKWEAR





THE CONTINENTAL

TWO PIECE OVERALL

SUIT: 12S00 JACKET: 13S00 TROUSER: 14S00



Fabric

154 - 100% Cotton

Weight

220gsm

Garment Features

- Concealed five gauge nickel-free brass center front slider on jacket
- Single breast pocket with flap and stud closure
- Two patch pockets
- Two side pockets
- Triple lapped seams
- Hip and rule pocket
- Five gauge nickel-free brass zip fly on trousers

Fabric Features

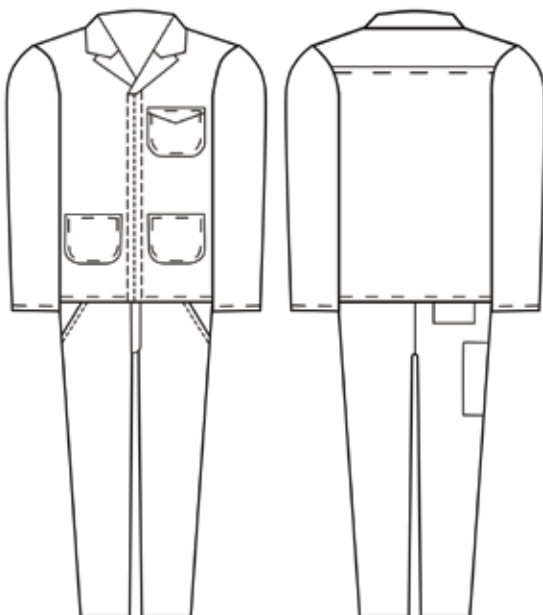
- Good moisture control
- Breathable
- Durable
- 100% cotton which is naturally antistatic
- Easy Care
- Hardwearing but comfortable in all seasons

Available Sizes

Jacket	Trouser
87-127	77-117

* 5% rise per size applies to garments greater than size 127.

* Smaller sizes available on request.



Royal Blue



Navy Blue



Grey



Original DENIM



THE CONTINENTAL TWO PIECE DENIM OVERALL

SUIT: 12N00 JACKET: 13N00 TROUSER: 14N00

Fabric	Weight
100% Cotton - Denim	13oz

Garment Features

- Concealed five gauge nickel-free brass center front slider on jacket
- Single breast pocket with flap and stud closure
- Two patch pockets
- Two side pockets
- Triple lapped seams
- Hip and rule pocket
- Five gauge nickel-free brass zip fly on trousers

Fabric Features

- Hardwearing
- Durable and long lasting
- Moisture control
- Unsanforized finish
- Dimensional stability
- Fabric becomes more appealing and comfortable after extensive laundering

Available Sizes

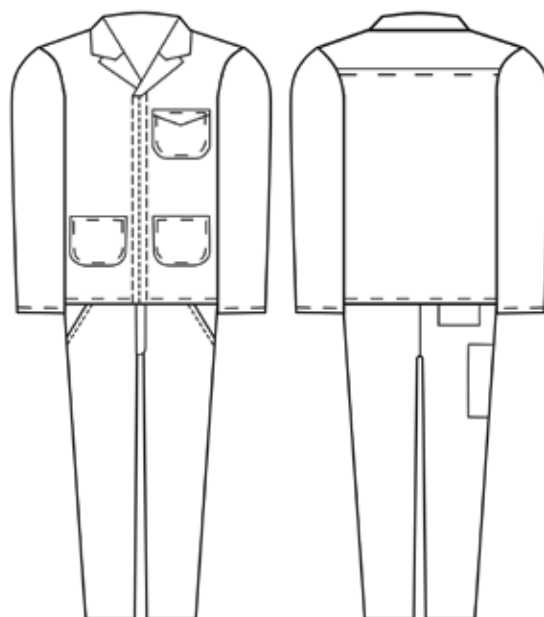
Jacket	Trouser
87-127	77-117

* 5% rise per size applies to garments greater than size 127.

* Smaller sizes available on request.



Indigo





THE CONTINENTAL MX

HEAVY DUTY TWO PIECE OVERALL

SUIT: 12S00 JACKET: 13S00 TROUSER: 14S00



Fabric

D59 - 100% Cotton

Weight

270gsm

Garment Features

- Concealed five gauge nickel-free brass center front slider on jacket
- Single breast pocket with flap and stud closure
- Two patch pockets
- Two side pockets
- Triple lapped seams
- Hip and rule pocket
- Five gauge nickel-free brass zip fly on trousers

Fabric Features

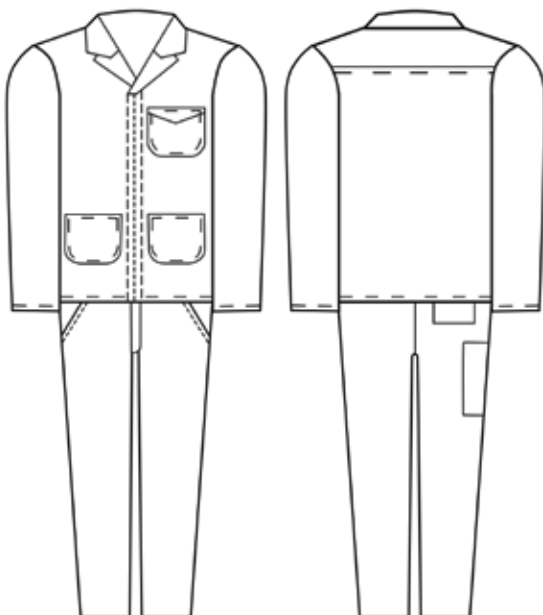
- Heavy Duty
- Hardwearing
- Durable and long lasting
- Moisture control
- Unsanforized finish
- Dimensional stability

Available Sizes

Jacket	Trouser
87-127	77-117

* 5% rise per size applies to garments greater than size 127.

* Smaller sizes available on request.



Royal Blue



Navy Blue



THE CONTINENTAL HIGH VISIBILITY TWO PIECE OVERALL

SUIT: 12S80 JACKET: 13S80 TROUSER: 14S80



Fabric

J54 - 100% Cotton

Weight

220gsm

Garment Features

- Concealed five gauge nickel-free brass center front slider on jacket
- Single breast pocket with flap and stud closure
- Two patch pockets
- Two side pockets
- Triple lapped seams
- Hip and rule pocket
- Five gauge nickel-free brass zip fly on trousers
- High Visibility Reflective Tape Variations

Fabric Features

- Hardwearing
- Durable and long lasting
- Moisture control
- Unsanforized finish
- Dimensional stability

Available Sizes

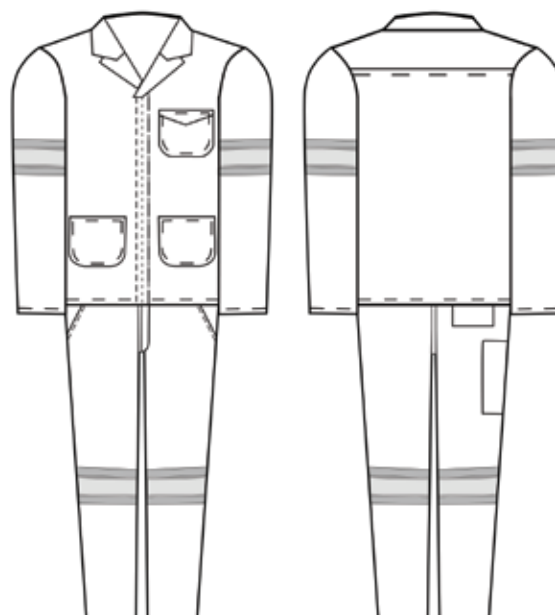
Jacket	Trouser
87-127	77-117

* 5% rise per size applies to garments greater than size 127.

* Smaller sizes available on request.



Royal Blue





ENGINEER'S SUIT

ONE PIECE OVERALL

STYLE: 11S02



Fabric

J54 - 100% Cotton

Weight

220gsm

Garment Features

- Long sleeve with elasticated cuffs
- Two breast pockets with flaps and stud closure
- Concealed five gauge nickel-free brass center front slider
- Two side entry pockets with vents
- Hip and rule pocket
- Five gauge nickel-free brass zip fly on trousers
- Elasticated waist band on back

Fabric Features

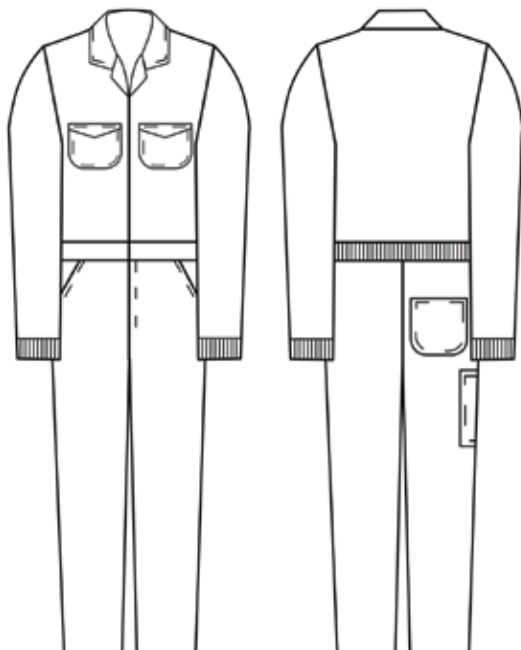
- Good moisture control
- Breathable
- Durable
- 100% cotton which is naturally antistatic
- Easy Care
- Hardwearing but comfortable in all seasons

Available Sizes

87-127

* 5% rise per size applies to garments greater than size 127.

* Smaller sizes available on request.



Royal Blue



Yellow



Original
DENIM



5 - POCKET JEAN

STYLE: 15N01

Fabric	Weight
100% Cotton - Denim	13oz

- Men's five pocket denim jean
- Zip fly
- Regular rise, relaxed from hip
- Beltloops

Available Sizes

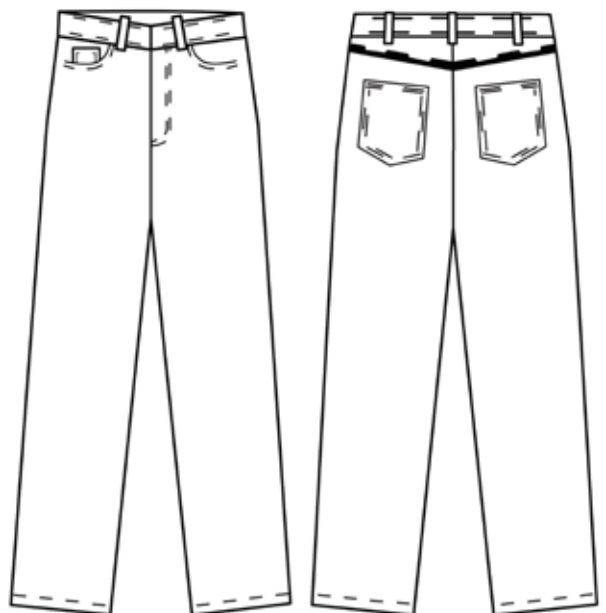
76 - 117

*5% rise per size applies to garments greater than size 117

* Smaller sizes available on request.



Stonewash



A photograph of industrial machinery in a factory. The central focus is a large, grey, vertical cylindrical component with an orange cap on top. It is surrounded by various pipes, some green and some white, and structural beams. The background shows a corrugated metal ceiling and other industrial equipment. The overall scene is dimly lit, with a blueish-grey color cast.

RISKY BUSINESS. RELIABLE WORKWEAR.

In the line of duty when dealing with volatile, flammable, dangerous, unhygienic materials and fluids, the occasional spill or burn is a harsh (and hindering) reality.

Sweet-Orr's innovative specialised range includes acid repellent, flame retardant and flame acid garments, specially developed for, low, medium and high risk environments.

**SPECIALISED
WORKWEAR**



SPECIALISED WORKWEAR



FACE THE HEAT

FLAME PROTECTION FOR
LOW, MEDIUM AND
HIGH-RISK ENVIRONMENTS.



**FLAME
RETARDANT**

FLAMESAFE®



THE CONTINENTAL FLAME RETARDANT TWO PIECE OVERALL

SUIT: 12N00 JACKET: 13N00 TROUSER: 14N00



SANS 434



Fabric

D59 - 100% Cotton

Weight

315gsm

Garment Features

- Concealed five gauge nickel-free brass center front slider on jacket
- Single breast pocket with flap and stud closure
- Two patch pockets
- Two side pockets
- Triple lapped seams
- Hip and rule pocket
- Five gauge nickel-free brass zip fly on trousers

Fabric Features

- 100% cotton which is naturally antistatic
- Excellent colour fasteners
- Comfort
- Breathable
- Flame retardant treated
- Protection against heat & flame
- Protection in molten splash & smelter environments

Available Sizes

Jacket	Trouser
87-127	77-117

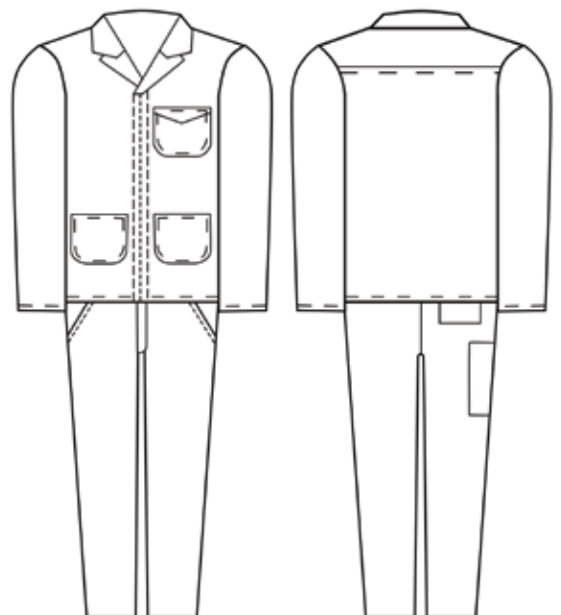
- * 5% rise per size applies to garments greater than size 127.
- * Smaller sizes available on request.



Fern Green



Navy Blue





THE CONTINENTAL

FLAME RETARDANT TWO PIECE OVERALL
WITH HIGH VISIBILITY DETAIL

SUIT: 12N80 JACKET: 13N80 TROUSER: 14N80



SANS 434



Fabric

D59 - 100% Cotton

Weight

315gsm

Garment Features

- Concealed five gauge nickel-free brass center front slider on jacket
- Single breast pocket with flap and stud closure
- Two patch pockets
- Two side pockets
- Triple lapped seams
- Hip and rule pocket
- Five gauge nickel-free brass zip fly on trousers
- High Visibility Reflective Tape Variations

Fabric Features

- 100% cotton which is naturally antistatic
- Excellent colour fasteners
- Comfort
- Breathable
- Flame retardant treated
- Protection against heat & flame
- Protection in molten splash & smelter environments

Available Sizes

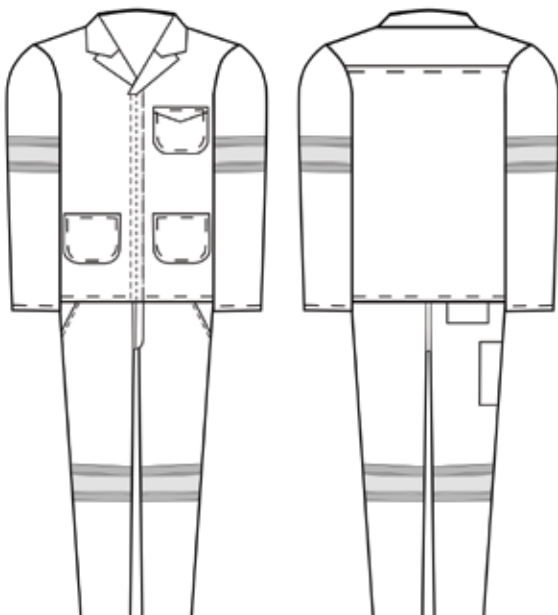
Jacket	Trouser
87-127	77-117

* 5% rise per size applies to garments greater than size 127.

* Smaller sizes available on request.



Fern Green





ENGINEER'S SUIT

FLAME RETARDANT ONE PIECE OVERALL

STYLE: 11N02



SANS 434



Fabric

D59 - 100% Cotton

Weight

315gsm

Garment Features

- Long sleeve with elasticated cuffs
- Two breast pockets with flaps and stud closure
- Concealed five gauge nickel-free brass center front slider
- Two side entry pockets with vents
- Hip and rule pocket
- Five gauge nickel-free brass zip fly on trousers
- Elasticated waist band on back

Fabric Features

- 100% cotton which is naturally antistatic
- Excellent colour fasteners
- Comfort
- Breathable
- Flame retardant treated
- Protection against heat & flames
- Protection in molten splash & smelter environments

Available Sizes

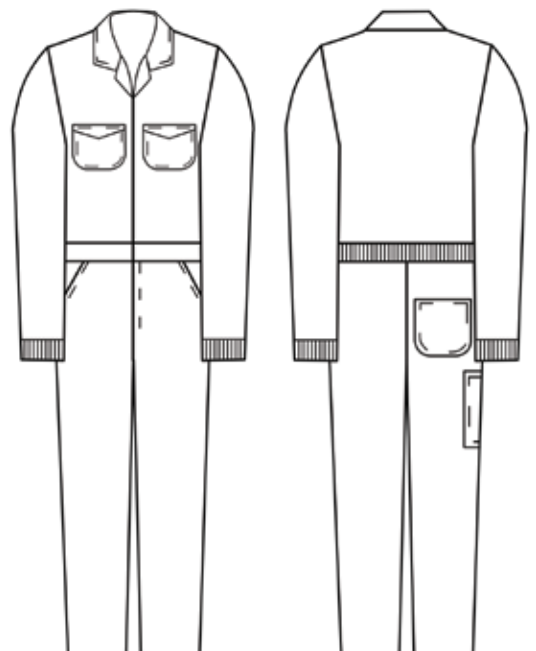
87-127

* 5% rise per size applies to garments greater than size 127.

* Smaller sizes available on request.



Fern Green



SPECIALISED WORKWEAR



CREATE THE BARRIER

PROTECTION AGAINST
HARSH AND CORROSIVE
SUBSTANCES.



ACID
REPELLANT



THE CONTINENTAL ACID REPELLANT TWO PIECE OVERALL

SUIT: 12N00 JACKET: 13N00 TROUSER: 14N00



Fabric	Weight
80% / 20% Poly Viscose	265gsm

Garment Features

- Concealed five gauge nickel-free brass center front slider on jacket
- Single breast pocket with flap and stud closure
- Two patch pockets
- Two side pockets
- Triple lapped seams
- Hip and rule pocket
- Five gauge nickel-free brass zip fly on trousers

Fabric Features

- Protection against these liquid chemicals;
 - Nitric Acid
 - Hydrochloric Acid
 - Sulphuric Acid
 - Sodium Hydroxide
- Oil repellent
- Excellent crease resistance
- Excellent colour fasteners
- Comfortable & soft satin finish

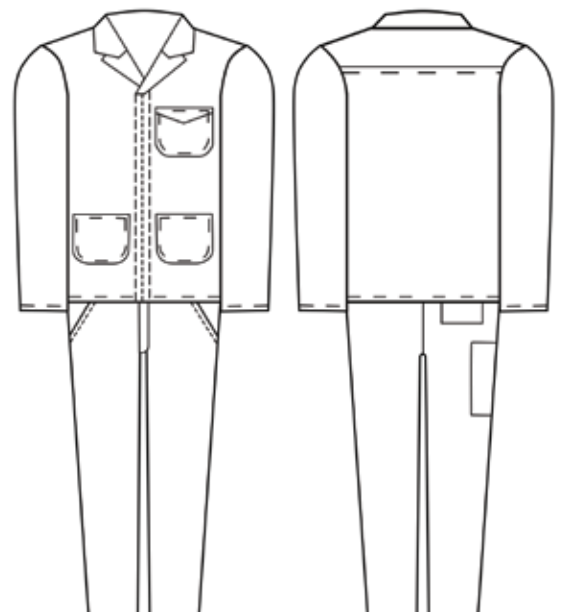
Available Sizes

Jacket	Trouser
87-127	77-117

* 5% rise per size applies to garments greater than size 127.
 * Smaller sizes available on request.



Bottle Green





THE CONTINENTAL

ACID REPELLANT TWO PIECE OVERALL WITH HIGH VISIBILITY DETAIL

SUIT: 12N80 JACKET: 13N80 TROUSER: 14N80



Fabric

80% / 20% Poly Viscose

Weight

265gsm

Garment Features

- Concealed five gauge nickel-free brass center front slider on jacket
- Single breast pocket with flap and stud closure
- Two patch pockets
- Two side pockets
- Triple lapped seams
- Hip and rule pocket
- Five gauge nickel-free brass zip fly on trousers
- High Visibility Reflective Tape Variations

Fabric Features

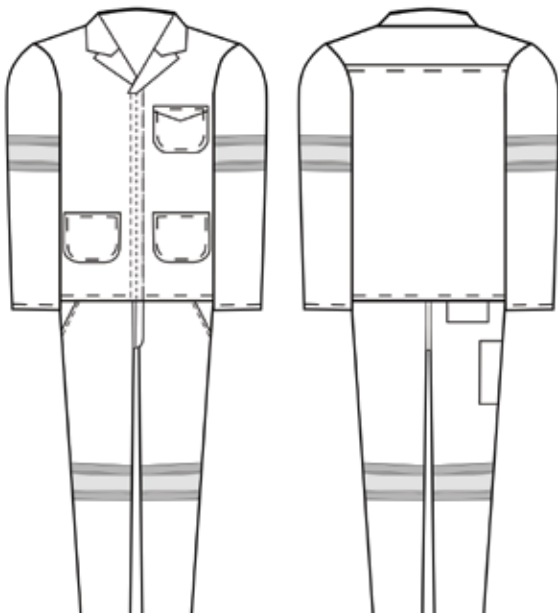
- Protection against these liquid chemicals:
 - Nitric Acid
 - Hydrochloric Acid
 - Sulphuric Acid
 - Sodium Hydroxide
- Oil repellent
- Excellent crease resistance
- Excellent colour fasteners
- Comfortable & soft satin finish

Available Sizes

Jacket	Trouser
87-127	77-117

* 5% rise per size applies to garments greater than size 127.

* Smaller sizes available on request.



Bottle Green



ENGINEER'S SUIT

ACID REPELLANT ONE PIECE OVERALL

STYLE: 11N02



Fabric **Weight**
80% / 20% Poly Viscose 265gsm

Garment Features

- Long sleeve with elasticated cuffs
- Two breast pockets with flaps and stud closure
- Concealed five gauge nickel-free brass center front slider
- Two side entry pockets with vents
- Hip and rule pocket
- Five gauge nickel-free brass zip fly on trousers
- Elasticated waist band on back

Fabric Features

- Protection against these liquid chemicals:
 - Nitric Acid
 - Hydrochloric Acid
 - Sulphuric Acid
 - Sodium Hydroxide
- Oil repellent
- Excellent crease resistance
- Excellent colour fasteners
- Comfortable & soft satin finish

Available Sizes

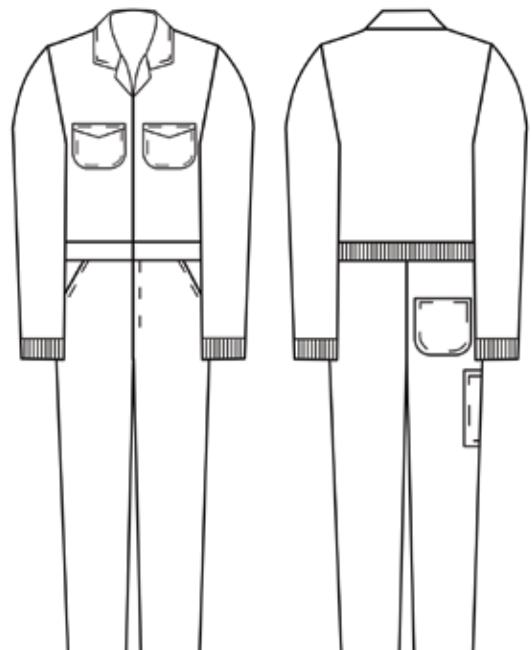
87-127

* 5% rise per size applies to garments greater than size 127.

* Smaller sizes available on request.



Bottle Green



SPECIALISED WORKWEAR



DOUBLE DUTY

COMPLEX SOLUTION
FOR CHALLENGING
ENVIRONMENTS.



**FLAME
ACID**



THE CONTINENTAL FLAME ACID TWO PIECE OVERALL

SUIT: 12S84

JACKET: 13S84

TROUSER: 14S84



SANS 434



Fabric

D59 - 100% Cotton

Weight

315gsm

Arc Rating

15,00 cal/cm²

Garment Features

- Concealed five gauge nickel-free brass center front slider on jacket
- Elasticated Cuffs
- Single breast pocket with flap and stud closure
- Two patch pockets
- Two side pockets
- Triple lapped seams
- Hip and rule pocket
- Five gauge nickel-free brass zip fly on trousers
- High Visibility Reflective Tape Variations

Fabric Features

- 100% cotton which is naturally antistatic
- Excellent colour fasteners
- Comfort
- Breathable
- Dual Function (Flame Retardant and Acid Repellent properties)
- Protection in molten splash & smelter environments
- Arc rating: 15 Cal/cm² ATPV

Available Sizes

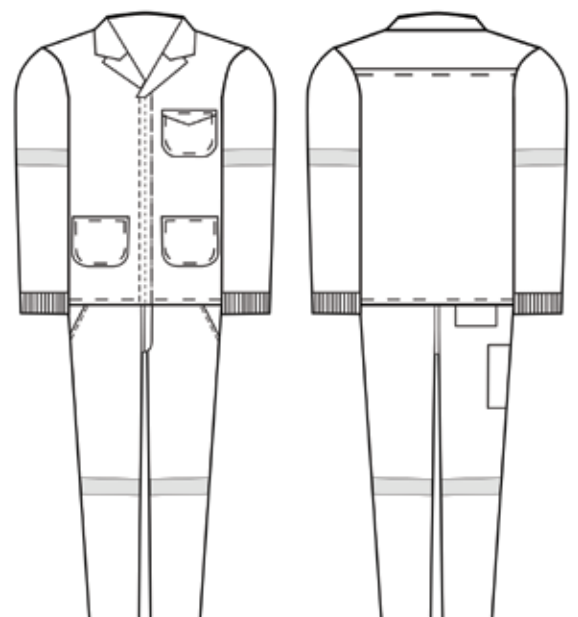
Jacket	Trouser
87-127	77-117

* 5% rise per size applies to garments greater than size 127.

* Smaller sizes available on request.



Navy



ESSENTIAL WORKWEAR

GARMENT	FABRIC	AVAILABLE COLOURS	STYLE CODE	PAGE
<i>The Continental Two Piece Overall</i>	<i>J54</i>	<i>Royal Blue</i>	<i>12S00218805.AA</i>	<i>7</i>
<i>The Continental Overall Jacket</i>	<i>J54</i>	<i>Royal Blue</i>	<i>13S00218805.CA</i>	<i>7</i>
<i>The Continental Overall Trousers</i>	<i>J54</i>	<i>Royal Blue</i>	<i>14S00218805.PA</i>	<i>7</i>
<i>The Continental Two Piece Overall</i>	<i>J54</i>	<i>Navy Blue</i>	<i>12S00218856.AA</i>	<i>7</i>
<i>The Continental Two Piece Overall</i>	<i>J54</i>	<i>Grey</i>	<i>12S00218829.AA</i>	<i>7</i>
<i>The Continental Denim Two Piece Overall</i>	<i>Denim</i>	<i>Indigo</i>	<i>12N00601766.AA</i>	<i>8</i>
<i>The Continental Denim Overall Jacket</i>	<i>Denim</i>	<i>Indigo</i>	<i>13N00601766.CA</i>	<i>8</i>
<i>The Continental Denim Overall Trousers</i>	<i>Denim</i>	<i>Indigo</i>	<i>14N00601766.PA</i>	<i>8</i>
<i>The Continental MX Heavy Duty Two Piece Overall</i>	<i>D59</i>	<i>Royal Blue</i>	<i>12S00210705.AA</i>	<i>9</i>
<i>The Continental MX Heavy Duty Overall Jacket</i>	<i>D59</i>	<i>Royal Blue</i>	<i>13S00210705.CA</i>	<i>9</i>
<i>The Continental MX Heavy Duty Overall Trousers</i>	<i>D59</i>	<i>Royal Blue</i>	<i>14S00210705.PA</i>	<i>9</i>
<i>The Continental MX Heavy Duty Two Piece Overall</i>	<i>D59</i>	<i>Navy Blue</i>	<i>12S00210756.AA</i>	<i>9</i>
<i>The Continental High Visibility Two Piece Overall</i>	<i>J54</i>	<i>Royal Blue</i>	<i>12S80218805.AA</i>	<i>10</i>
<i>The Continental High Visibility Overall Jacket</i>	<i>J54</i>	<i>Royal Blue</i>	<i>13S80218805.CA</i>	<i>10</i>
<i>The Continental High Visibility Overall Trousers</i>	<i>J54</i>	<i>Royal Blue</i>	<i>14S80218805.PA</i>	<i>10</i>
<i>Engineer's Suit One Piece Overall</i>	<i>J54</i>	<i>Royal Blue</i>	<i>11S02218805.BA</i>	<i>11</i>
<i>Engineer's Suit One Piece Overall</i>	<i>J54</i>	<i>Yellow</i>	<i>11S02218902.BA</i>	<i>11</i>
<i>5-Pocket Jeans</i>	<i>Denim</i>	<i>Indigo</i>	<i>15N01601766.JA</i>	<i>12</i>

SPECIALISED WORKWEAR

FLAME RETARDANT

GARMENT	FABRIC	AVAILABLE COLOURS	STYLE CODE	PAGE
<i>The Continental Flame Retardant Two Piece Overall</i>	<i>D59</i>	<i>Fern Green</i>	<i>12N00213007.AA</i>	<i>16</i>
<i>The Continental Flame Retardant Overall Jacket</i>	<i>D59</i>	<i>Fern Green</i>	<i>13N00213007.CA</i>	<i>16</i>
<i>The Continental Flame Retardant Overall Trousers</i>	<i>D59</i>	<i>Fern Green</i>	<i>14N00213007.PA</i>	<i>16</i>
<i>The Continental Flame Retardant Two Piece Overall</i>	<i>D59</i>	<i>Navy Blue</i>	<i>12N00213056.AA</i>	<i>16</i>
<i>The Continental Flame Retardant Overall Jacket</i>	<i>D59</i>	<i>Navy Blue</i>	<i>13N00213056.CA</i>	<i>16</i>
<i>The Continental Flame Retardant Overall Trousers</i>	<i>D59</i>	<i>Navy Blue</i>	<i>14N00213056.PA</i>	<i>16</i>
<i>The Continental Flame Retardant Two Piece Overall With High Visibility Detail</i>	<i>D59</i>	<i>Fern Green</i>	<i>12N80213007.AA</i>	<i>17</i>
<i>Engineer's Suit Flame Retardant One Piece Overall</i>	<i>D59</i>	<i>Fern Green</i>	<i>11N02213007.BA</i>	<i>18</i>

ACID REPELLANT

GARMENT	FABRIC	AVAILABLE COLOURS	STYLE CODE	PAGE
<i>The Continental Acid Repellant Two Piece Overall</i>	<i>80:20 Poly Viscose</i>	<i>Bottle Green</i>	<i>12N00221867.AA</i>	<i>20</i>
<i>The Continental Acid Repellant Overall Jacket</i>	<i>80:20 Poly Viscose</i>	<i>Bottle Green</i>	<i>13N00221867.CA</i>	<i>20</i>
<i>The Continental Acid Repellant Overall Trousers</i>	<i>80:20 Poly Viscose</i>	<i>Bottle Green</i>	<i>14N00221867.PA</i>	<i>20</i>
<i>The Continental Acid Repellant Two Piece Overall With High Visibility Detail</i>	<i>80:20 Poly Viscose</i>	<i>Bottle Green</i>	<i>12N80221867.AA</i>	<i>21</i>
<i>Engineer's Suit Acid Repellant One Piece Overall</i>	<i>80:20 Poly Viscose</i>	<i>Bottle Green</i>	<i>11N02221867.BA</i>	<i>22</i>

FLAME ACID

GARMENT	FABRIC	AVAILABLE COLOURS	STYLE CODE	PAGE
<i>The Continental Flame Acid Two Piece Overall</i>	<i>D59</i>	<i>Navy Blue</i>	<i>12S84215056.AA</i>	<i>24</i>
<i>The Continental Flame Acid Overall Jacket</i>	<i>D59</i>	<i>Navy Blue</i>	<i>13S84215056.CA</i>	<i>24</i>
<i>The Continental Flame Acid Overall Trousers</i>	<i>D59</i>	<i>Navy Blue</i>	<i>14S84215056.PA</i>	<i>24</i>

CONTACT DETAILS

Cape Town Head Office and Showroom

Cnr 8th Avenue & 16th Street, Elsies River Industrial,
Cape Town, 7490

+27 21 932 6921

Johannesburg Showroom

Shop A1, Cnr Top and Atlas Road,
Westwood, Boksburg, 1477

+27 11 791 3161

Sweet-Orr is a Level 1 B-BBEE Supplier
REG. NO 1997/018873/07

WWW.SWEET-ORR.COM



SWEET-ORR®

WE NEVER LET YOU DOWN



· EST 1871 ·

Sweet-Orr is a market leader in protective workwear.
Our products offer superior protection in some of the most hazardous environments.

The toughest conditions require the toughest garments.
As such, our workwear works as hard as you do.
Driven by service and passion, our garments are crafted on the promise of quality.